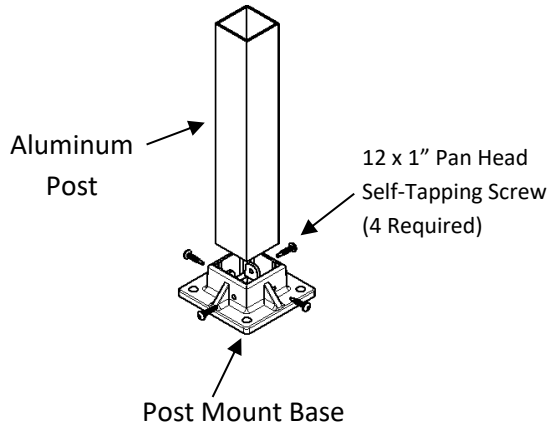


# 2" & 2.5" Post Mount Instructions

## Installation Instructions

- It is the responsibility of the installer to meet all code and safety requirements, and to obtain all required building permits. The installer should determine and implement the installation techniques appropriate for each unique installation situation. Digger Specialties, Inc. and its distributors shall not be held liable for improper or unsafe installations.
- These instructions must be followed exactly as written and the materials used must be exactly as shown in the instructions. Any deviation from the instructions or variation in the materials used/installed may result in an unsuccessful installation and will void the warranty.

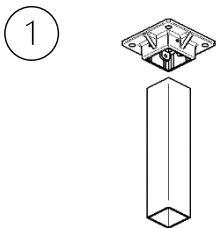
### Contents Required for Post Mount Assembly



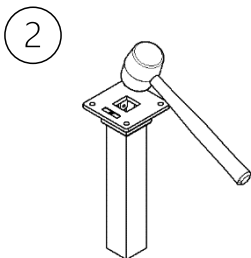
### Tools Needed

- Rubber Mallet
- Drill with #2 square drive bit

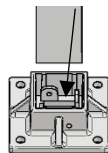
## 2" & 2.5" Post



Place aluminum post on a solid surface.  
Place post mount base on top of post.

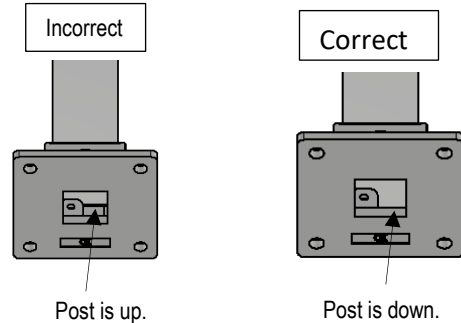


Use a rubber Mallet to tap the mount all the way onto post, until it seats all the way to bottom!  
(See arrow to right)

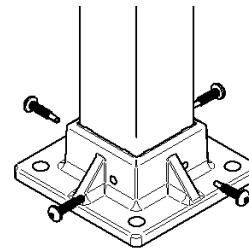


3

Check to make sure that the post is seated all the way to the bottom. Look in the bottom of mount to verify.



4



Insert (4) 12x1" self-tapping screws, into holes in mount. Use drill with #2 square drive bit.

## Care and Cleaning

Remove all particles and residue from Westbury aluminum components by referring to the Care and Cleaning requirements on the DSI website.



## Warranty

For product Warranty and Registration please scan below.

