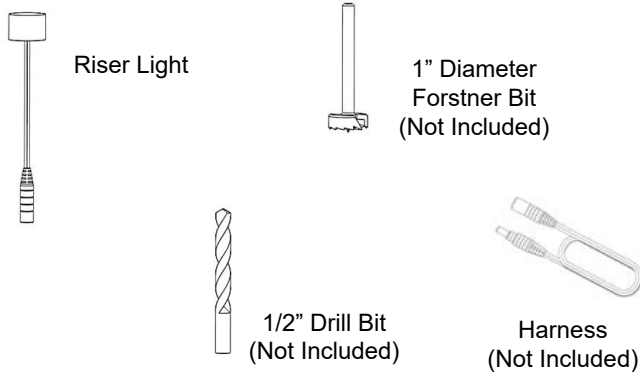


LED Riser Light

Installation Instructions

- It is the responsibility of the installer to meet all code and safety requirements and to obtain all required building permits. The installer should determine and implement the installation techniques appropriate for each unique installation situation. Digger Specialties, Inc. and its distributors shall not be held liable for improper or unsafe installations.
- These instructions must be followed exactly as written and the materials used must be exactly as shown in the instructions. Any deviation from the instructions or variation in the materials used/installed may result in an unsuccessful installation and will void the warranty.

Parts List



Important Notes

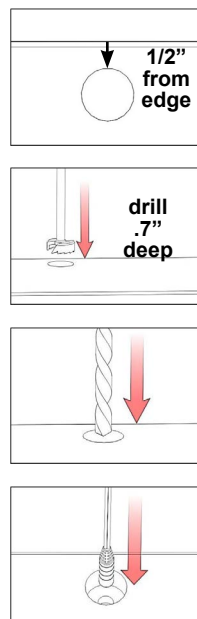
- The use of non Magen Star® products with Magen Star® Lighting including Transformers, Wire Harnesses, and Splitters may void the warranty.
- Do not cut any wires. Any extra wire length can be coiled.
- Ensure that staples, used to hold wires in place, and all other screws or brackets will not damage or pinch any of the wires.
- Connections can be made by firmly pushing the male and female connectors together and slightly twisting while pushing.
- During installation, it is recommended that you confirm each light is functional before installation is complete.

Step 1: Prepare the Transformer and Wiring Harness

1. Follow instructions provided with the DSI Magen Star® Transformer.
2. Follow instructions for the wiring harnesses so there is a male connector located at each post location that will have a light installed.

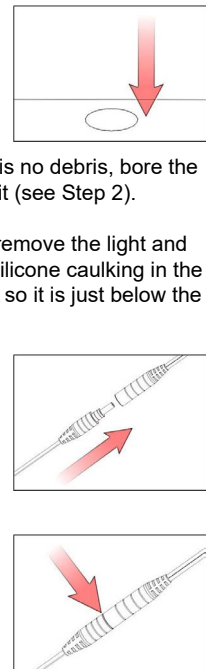
Step 2: Drill Holes and Install Light

1. Layout the location of the light(s). To prevent splitting, do not install within 1/2" of the edge (1" from center) of the light and the edge the deck board.
2. Use a 1" Diameter Forstner Bit to bore a flat bottom hole .7" deep into the deck board.
NOTE: Do not drill completely through the deck board with this bit.
3. Drill a 1/2" diameter hole in the center of the hole that was drilled in Step 2. Drill completely through the deck board with this bit.
4. Place the connector and wire attached to the light through the hole that was drilled in Step 3.



Step 2 Continued:

5. Gently insert the flush mount light into the hole that was drilled in Step 2. The top of the light should sit just below the surface of the deck board.
 - a. If the light is above the deck surface, remove it and check for debris. If there is no debris, bore the hole slightly deeper with the Forstner Bit (see Step 2).
 - b. If the light is too far below the surface, remove the light and place a small amount of clear exterior silicone caulking in the bottom of the hole and reinsert the light so it is just below the surface of the deck board.
6. Underneath the deck, plug the male connector of the Harness from Step 2 of Prepare the Transformer and Wiring Harness into the female connector attached to the light. Press firmly until the connection is fully engaged.
7. Connection is fully engaged when there is minimal gap between the male and female connector.
8. The flush mount light will now be illuminated if the transformer is on and the harness is plugged in.



Step 3: Finalize Installation

1. If dark tape was used to cover the photocell on the transformer during the installation process, remove it for normal operation.