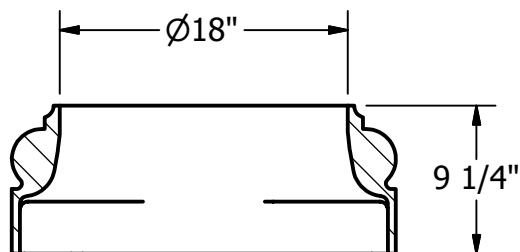
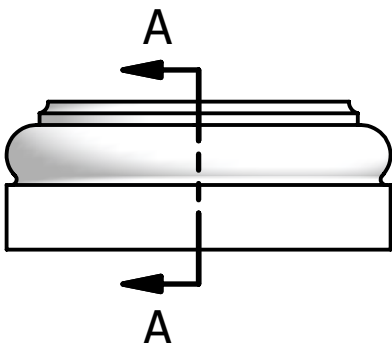
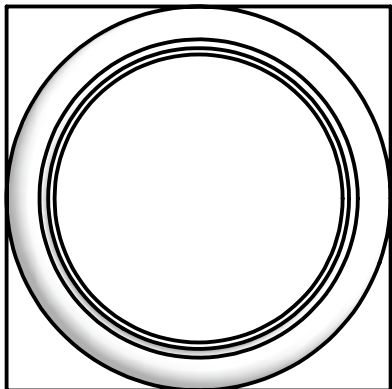


2

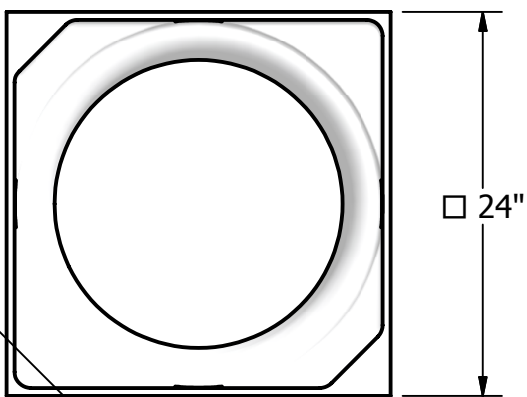
1

NOTES:

- 1. MATERIAL: FIBERGLASS REINFORCED POLYMER (FRP)
- 2. WEIGHT: 47 Lbs.
- 3. INSIDE DIAMETER: 18"
- 4. OUTSIDE DIAMETER: 24"

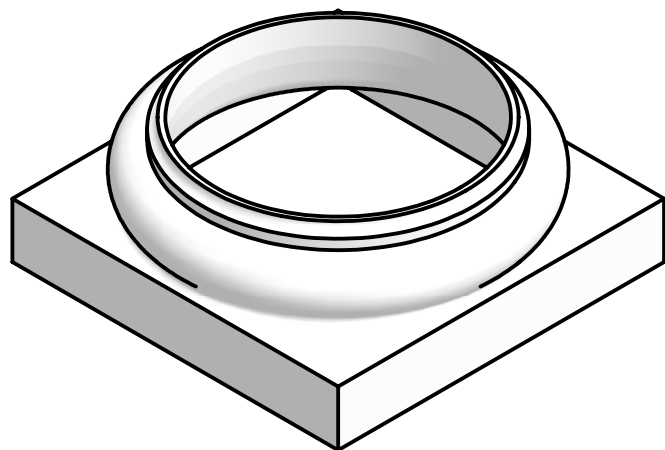


SECTION A-A





33 15/16"

□ 24"



NOT TO SCALE

| | | | |
|---|------------|--|---|
| DRAWN Bryan Daniels | 4/21/2016 |  <i>Transforming the Outdoor Living Experience</i> |  |
| CHECKED | | | |
| QA | | | |
| MFG | | | |
| APPROVED | | | |
| DIMENSIONS ARE IN INCHES TOLERANCE: ± 1/4" | | TITLE Fiberglass/Composite Doric Round Base 18 Inch | DWG NO TB2618 |
| SIZE A | SCALE 1:12 | DWG NO TB2618 | REV 03 |
| | | SHEET 1 OF 1 | |

2

1