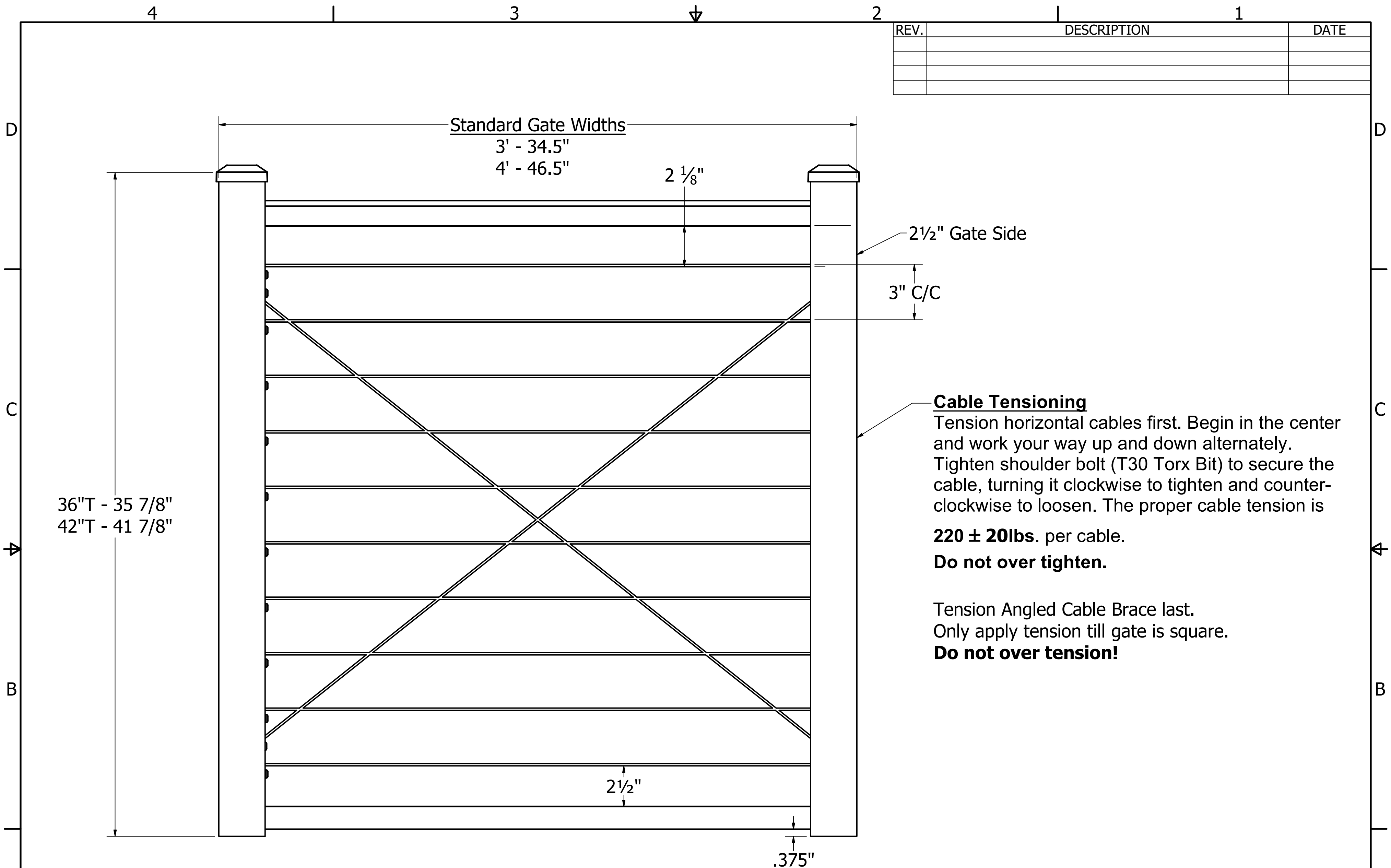


REV.	DESCRIPTION	DATE




Cable Tensioning
Tension horizontal cables first. Begin in the center and work your way up and down alternately. Tighten shoulder bolt (T30 Torx Bit) to secure the cable, turning it clockwise to tighten and counter-clockwise to loosen. The proper cable tension is **220 ± 20lbs.** per cable. **Do not over tighten.**

Tension Angled Cable Brace last. Only apply tension till gate is square. **Do not over tension!**

C91 Adjustable Gates
3FT & 4FT
No welding.
Gate ends secured via cable tension.

36\"T - 10 cables
42\"T - 12 cables
(2 Angle brace cable)

 Digger Specialties Inc. <i>Transforming the Outdoor Living Experience™</i> 3446 US 6 EAST BREMEN, IN 46506 diggerspecialties.com	WEIGHT:	DRAWN BY: RP	MATERIAL:
	STANDARD TOLERANCE: .00 \".01 .000 \".005 ANG. \".5~	DATE DRAWN: 4/15/2024	PART NAME: C91 Adjustable Gates BOM.idw
	FRACTIONS: ± 1/16"	DRAFT NO. 20240415-1R	
	FILE LOC: Z:\Aluminum\Westbury\C91 Bella Cavo\Gates\C91 Adjustable Gates BOM.idw	PART NUMBER:	REV.