

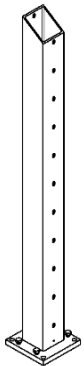
2 1/2" Crossover Post

Bella Cavo (Style C90,C91)

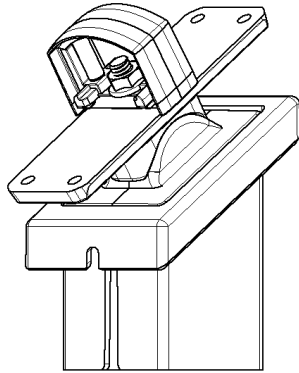
Installation Instructions

- It is the responsibility of the installer to meet all code and safety requirements, and to obtain all required building permits. The installer should determine and implement the installation techniques appropriate for each unique installation situation. Digger Specialties, Inc. and its distributors shall not be held liable for improper or unsafe installations.
- These instructions must be followed exactly as written, and the materials used must be exactly as shown in the instructions. Any deviation from the instructions or variation in the materials used/installed may result in an unsuccessful installation and will void the warranty.

Stair Crossover Post Kit



CO Post



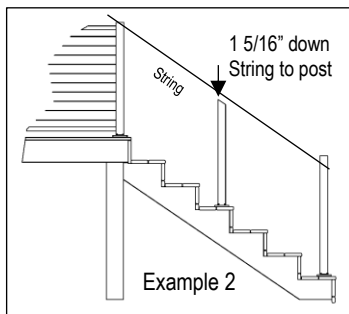
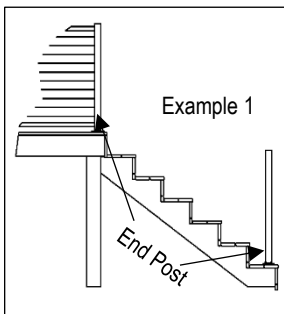
CO Assembly

Tools Required

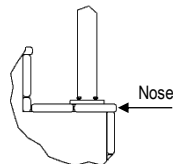
- Chop saw
- 1/2" Wrench
- String
- Drill
- #2 Bit

Note: This CO post kit is designed to accommodate a 2 1/2" post for horizontal cable railing. This assembly is adjustable within a range of 30° to 41°.

Post Placement

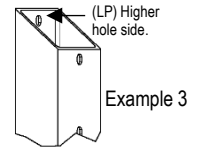


- First ensure your end posts are correctly positioned on steps according to instructions. (Example 1) (See our post placement instructions for C90)
- Determine the height of your top rail. Run a string between the two-end post where the **bottom** of the rail will be located.
- Place the CO post on stairs in the desired location. Measure from the nose of tread to the edge of post plate and ensure it is the same as your end post. (Example 2)



Post Placement cont'd

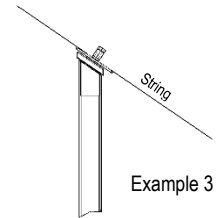
Note: This post is already cut to length and the proper angle.



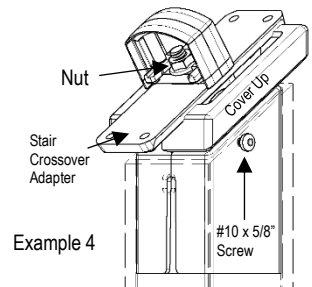
Example 3

Stair Crossover Assembly

- Place CO assembly into post.
- Bring your mount (adapter) up to and align to your string. This sets the height of your CO Assembly. (Example 3)
- Pull the cover up. Secure (2) screws (#10 x 5/8") one to each opposing side, ensuring the cover conceals the screw heads. (Example 4)
- Bring cover down and over post.
- To set the angle, align your adapter with your string. Tighten your nut with a 1/2" wrench.
- Measure and place top rails.



Example 3



Example 4

Care and Cleaning

Remove all particles and residue from Westbury Aluminum components by referring to the Care and Cleaning requirements on the DSI website. Scan QR code.



SCAN ME

Warranty

For product Warranty and Registration please scan QR code:



SCAN ME