

# Westbury Round Column

## Installation Instructions



- |   |  |
|---|--|
| <ul style="list-style-type: none"><li>• DSI round columns are load bearing columns.</li><li>• Staves snap together to form a column.</li><li>• NOTE: Always check local building codes before installing columns.</li></ul> | <ul style="list-style-type: none"><li>• <u>Tools needed:</u><ul style="list-style-type: none"><li>◦ Chop saw with non-ferrous metal blade</li><li>◦ Cordless screw gun</li><li>◦ #2 square head bit</li><li>◦ Level</li><li>◦ Touch up paint</li></ul></li></ul> |
|---|--|

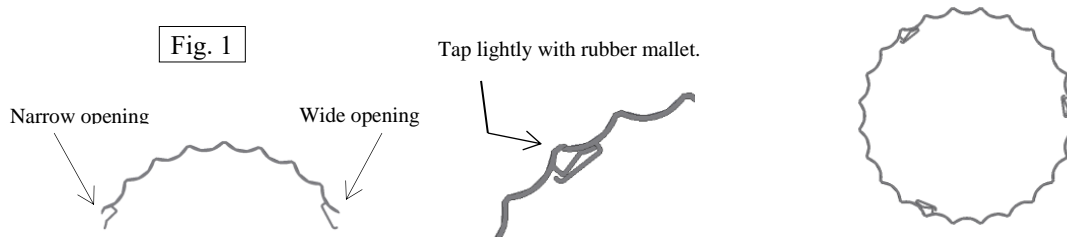
### Load Bearing Application:

**Step 1** Measure height of opening where column is to be located. Cut all staves to length with nonferrous metal blade in chop saw. All three (3) staves, (5) staves for 12" round) must be cut to the same length.

- Note: Cut staves 1/4" taller than opening for load bearing application.

**Step 2** Notice the ends of the stave. Hinge the narrow opening of one stave into the wide opening of the other stave. Hinge the last stave the same way and snap the column together. Tap lightly with a rubber mallet if necessary. (See Fig.1)

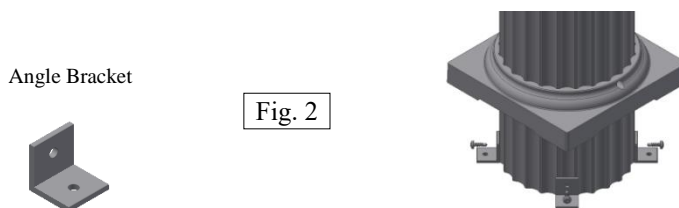
- Note: When installing column on treated wood surfaces, raw column ends must be painted to provide a barrier between aluminum column and treated wood surface.



**Step 3** Raise header, position the column in place, and center load onto column to ensure even distribution on each side of column.

- Note: Install on a smooth and level surface.

**Step 4** Locate eight (8) angle brackets at the top and bottom of the column. (See Fig. 2) Use screws provided to attach angle brackets to column. Use appropriate fasteners to attach angle brackets to mounting surface (not included).



**Step 5** Install split (2) piece Capital and Base set by placing one half of the base against column and snapping the hooks of mating half of base into each other. A rubber mallet may be used to snap split (2) piece Base together, being careful not to hit column. Install screws on each side of the base. Repeat same procedure for split (2) piece Capital at top of column. (Fig.3)

# Westbury Round Column

## Installation Instructions

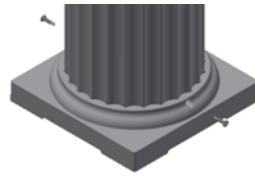


Fig. 3

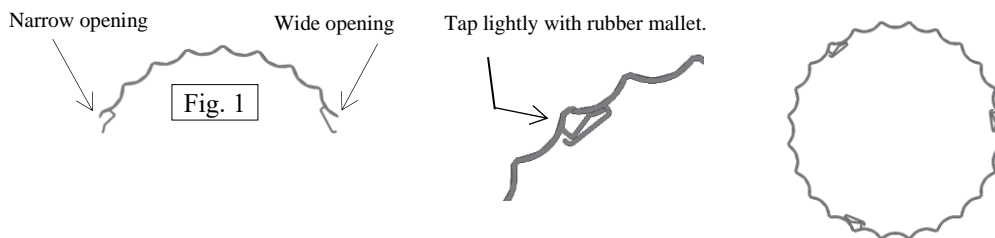
Note: 6" and 8" diameter round columns up to 10' long can be ordered to include Split (2 piece) Capital and Base with angle brackets (8 pack) in column box.  
All other round column sizes will require capital, base and angle brackets to be ordered separately.

### Post Wrap Application:

Best installation practice is to remove existing supports and replace with Westbury Columns. If wrapping an existing support, please review the guidelines below. A Column Dimension Specifications Help Sheet is available at [diggerspecialties.com](http://diggerspecialties.com) with more details.

**Step 1** Measure height of opening where column is to be located. Cut all staves to length with nonferrous metal blade in chop saw. All staves must be cut to the same length.

- Note: Cut staves  $\frac{1}{4}$ " shorter than opening height for non-load bearing application.



**Step 2** Notice the ends of the staff. Hinge the narrow opening of one staff into the wide opening of the other staff.

**Step 3** Hinge the last staff the same way and snap the column together. Tap lightly with a rubber mallet if necessary. (Fig.1)

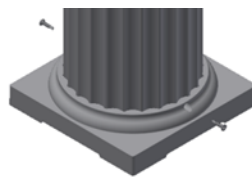
# Westbury Round Column

## Installation Instructions



6" column will wrap around a 3½" sq. or a 4½" Round Existing Support.  
8" column will wrap around a 4½" sq. or a 6¼" Round Existing Support.  
10" column will wrap around a 6" sq. or a 7¾" Round Existing Support.  
12" column will wrap around a 7½" sq. or a 9¾" Round Existing Support.

**Step 4** Install split (2) piece Capital and Base set by placing one half of the base against column and snapping the hooks of mating half of base into each other. A rubber mallet may be used to snap split (2 piece) Base together, being careful not to hit column. Install screws on each side of the base. Repeat same procedure for split (2 piece) Capitol at top of column.



» If using other DSI mounting hardware please follow instructions specific to those products. «