

Westbury Square Column

Installation Instructions



- | | |
|--|--|
| <ul style="list-style-type: none">• DSI square columns are load bearing columns.• Staves snap together to form a column.• NOTE: Always check local building codes before installing columns. | <ul style="list-style-type: none">• <u>Tools needed:</u><ul style="list-style-type: none">◦ Chop saw with non-ferrous metal blade◦ Cordless screw gun◦ #2 square head bit◦ Level◦ Touch up paint |
|--|--|

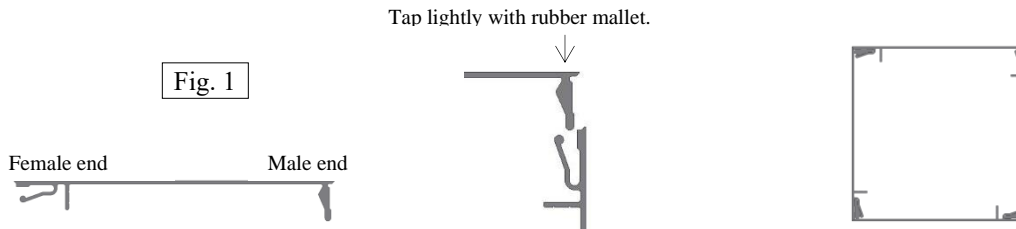
Load Bearing Application:

Step 1 Measure height of opening where column is to be located. Cut all staves to length with nonferrous metal blade in chop saw. All four (4) staves must be cut the same length.

- Note: Cut staves 1/4" taller than opening for load bearing application.

Step 2 Notice the ends of the stave. Insert male end of one stave into the female end of the other stave. Repeat with remaining staves to snap the column together. Tap lightly with a rubber mallet if necessary. (See Fig.1)

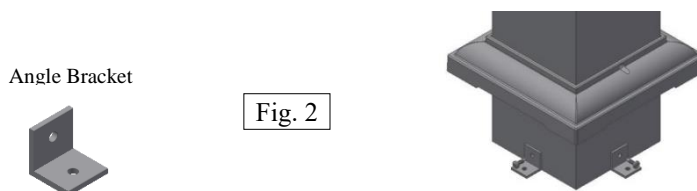
- Note: When installing column on treated wood surfaces, raw column ends must be painted to provide a barrier between aluminum column and treated wood surface.



Step 3 Raise header, position the column in place, and center load onto column to ensure even distribution on each side of column.

- Note: Install on a smooth and level surface.

Step 4 Install eight (8) angle brackets at the top and bottom of the column. (See Fig. 2) Use screws provided to attach angle brackets to column. Use appropriate fasteners to attach angle brackets to mounting surface (not included).



Step 5 When installing square recessed column attach filler blocks with screws provided to top and bottom of column (See Fig.3) before attaching angle brackets to corners of square recessed column. (See Fig. 4)

Westbury Square Column

Installation Instructions

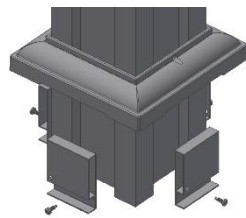


Fig. 3

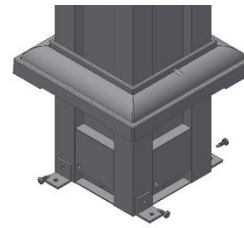


Fig. 4

Step 6 When installing additional filler blocks for 2 or three panel look the blocks will need to be fastened from the inner wall of each stave before the column is assembled.

Step 7 Install split (2) piece Capital and Base set by placing one half of the base against column and snapping the hooks of mating half of base into each other. A rubber mallet may be used to snap split (2 piece) Base together, being careful not to hit column. Install screws on each side of the base. Repeat same procedure for split (2 piece) Capitol at top of column.

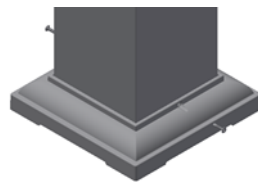


Fig. 5

Note: 6” and 8” diameter square columns up to 10’ long include capital (1pc), base (1pc) and angle brackets (8 pack) in column boxes.
All other square column sizes will require capital, base, and angle brackets to be ordered separately.

Post Wrap Application:

Best installation practice is to remove existing supports and replace with Westbury Columns. If wrapping an existing support, please review the guidelines below. A Column Dimension Specifications Help Sheet is available at diggerspecialties.com with more details.

Step 1 Measure height of opening where column is to be located. Cut all staves to length with nonferrous metal blade in chop saw. All four (4) staves must be cut the same length.

- Note: Cut staves ¼” shorter than opening height for non-load bearing application.

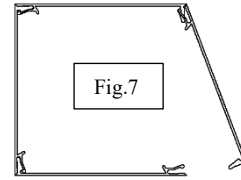
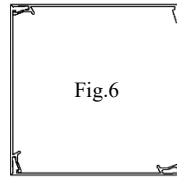
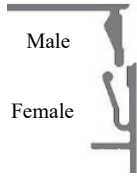
Step 2 Notice the ends of the stave. Insert male end of one stave into the female end of the other stave.

Westbury Square Column

Installation Instructions



Tap lightly with rubber mallet.



Step 3 Snap together 3 sides to make a U channel. (Fig. 6) Tap lightly with a rubber mallet if necessary.

Step 4 Place around your post.

Step 5 Snap your 4th piece into place. (Fig.7)

Square Fluted, Square Smooth, and Square Smooth with Astragal Columns

6" Column will wrap around a 4" Square or Round Existing Support

8" Column will wrap around a 6" Square or Round Existing Support

10" Column will wrap around an 8" Square or Round Existing Support

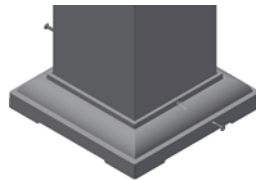
12" Column will wrap around a 10" Square or Round Existing Support

Square Recessed Column

6" Column will wrap around a 3-3/4" Square or Round Existing Support

8" Column will wrap around a 5-3/4" Square or Round Existing Support

Step 6 Install split (2) piece Capital and Base set by placing one half of the base against column and snapping the hooks of mating half of base into each other. A rubber mallet may be used to snap split (2 piece) Base together, being careful not to hit column. Install screws on each side of the base. Repeat same procedure for split (2 piece) Capitol at top of column.



» If using other DSI mounting hardware please follow instructions specific to those products. «