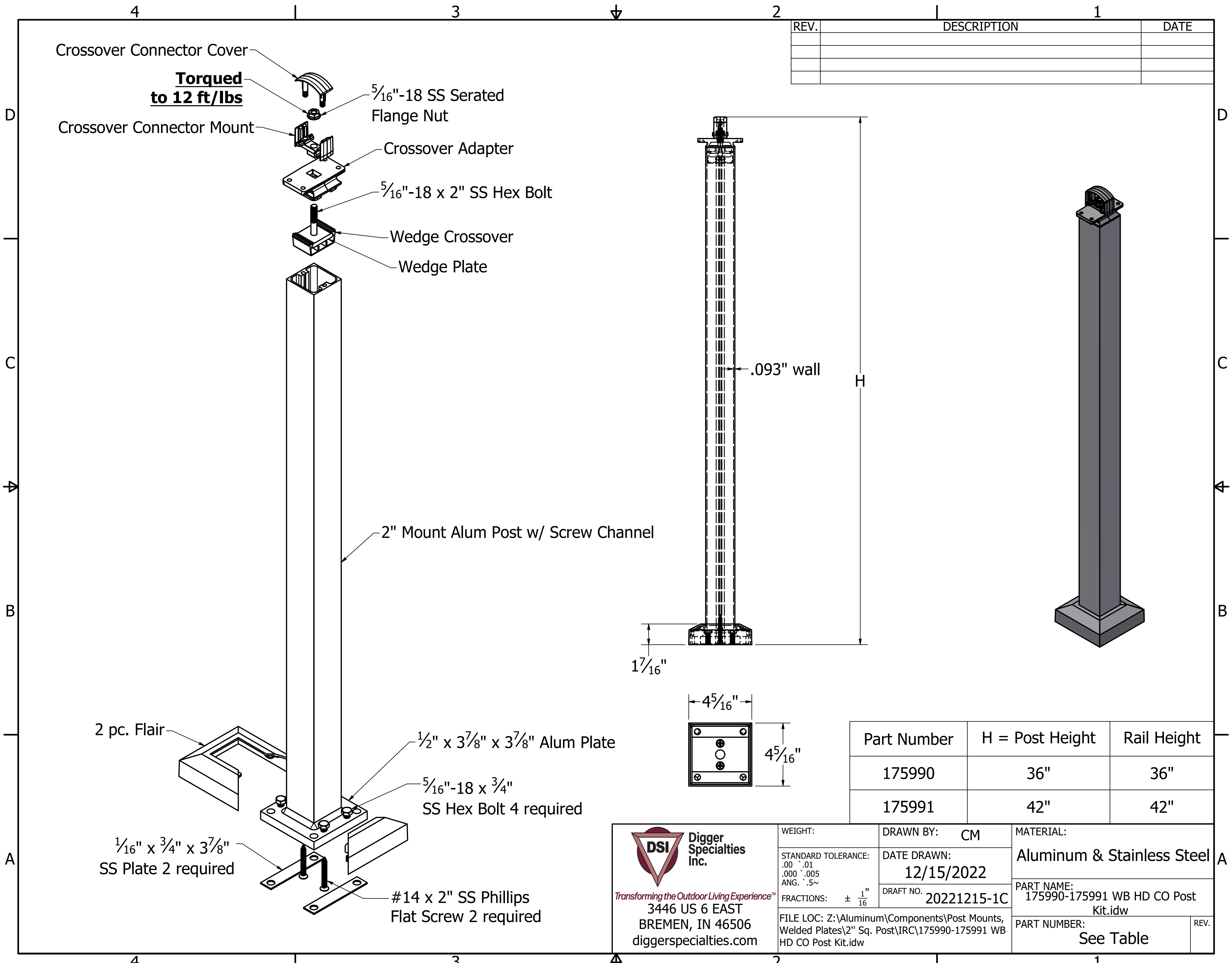


REV.	DESCRIPTION	DATE



Crossover Connector Cover

Torqued to 12 ft/lbs

Crossover Connector Mount

5/16"-18 SS Serated Flange Nut

Crossover Adapter

5/16"-18 x 2" SS Hex Bolt

Wedge Crossover

Wedge Plate

2" Mount Alum Post w/ Screw Channel

.093" wall

H

1 7/16"

4 5/16"

4 5/16"

2 pc. Flair


1/2" x 3 7/8" x 3 7/8" Alum Plate

5/16"-18 x 3/4" SS Hex Bolt 4 required

1/16" x 3/4" x 3 7/8" SS Plate 2 required

#14 x 2" SS Phillips Flat Screw 2 required

Part Number	H = Post Height	Rail Height
175990	36"	36"
175991	42"	42"

 <p>Digger Specialties Inc. Transforming the Outdoor Living Experience™ 3446 US 6 EAST BREMEN, IN 46506 diggerspecialties.com</p>	WEIGHT:	DRAWN BY: CM	MATERIAL:	
	STANDARD TOLERANCE: .00 \ .01 .000 \ .005 ANG. \ .5~	DATE DRAWN: 12/15/2022	Aluminum & Stainless Steel	
	FRACTIONS: ± 1/16"	DRAFT NO. 20221215-1C	PART NAME: 175990-175991 WB HD CO Post Kit.idw	
	FILE LOC: Z:\Aluminum\Components\Post Mounts, Welded Plates\2" Sq. Post\IRC\175990-175991 WB HD CO Post Kit.idw	PART NUMBER: See Table		REV.