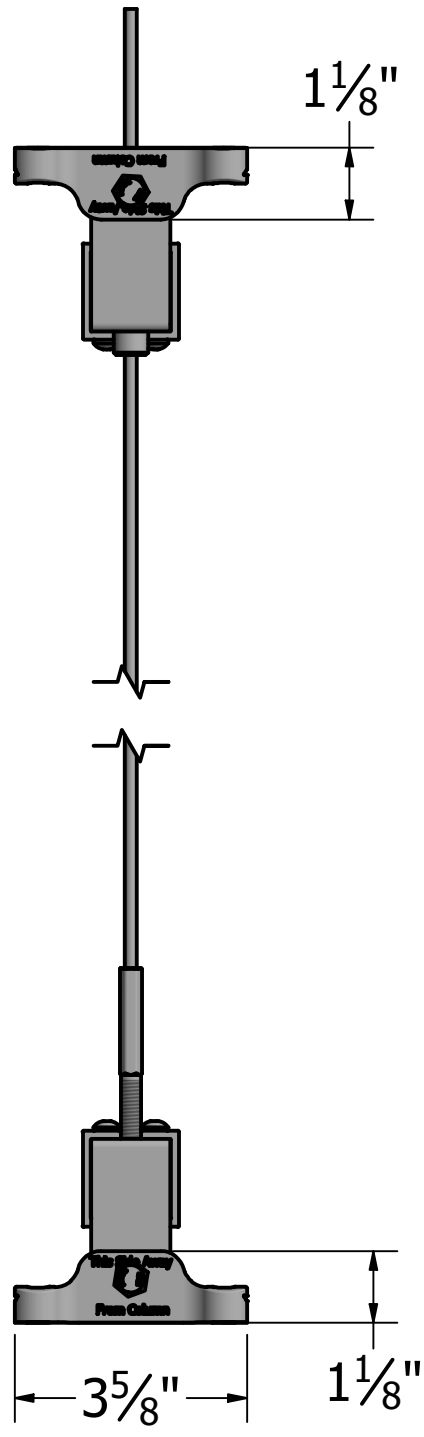
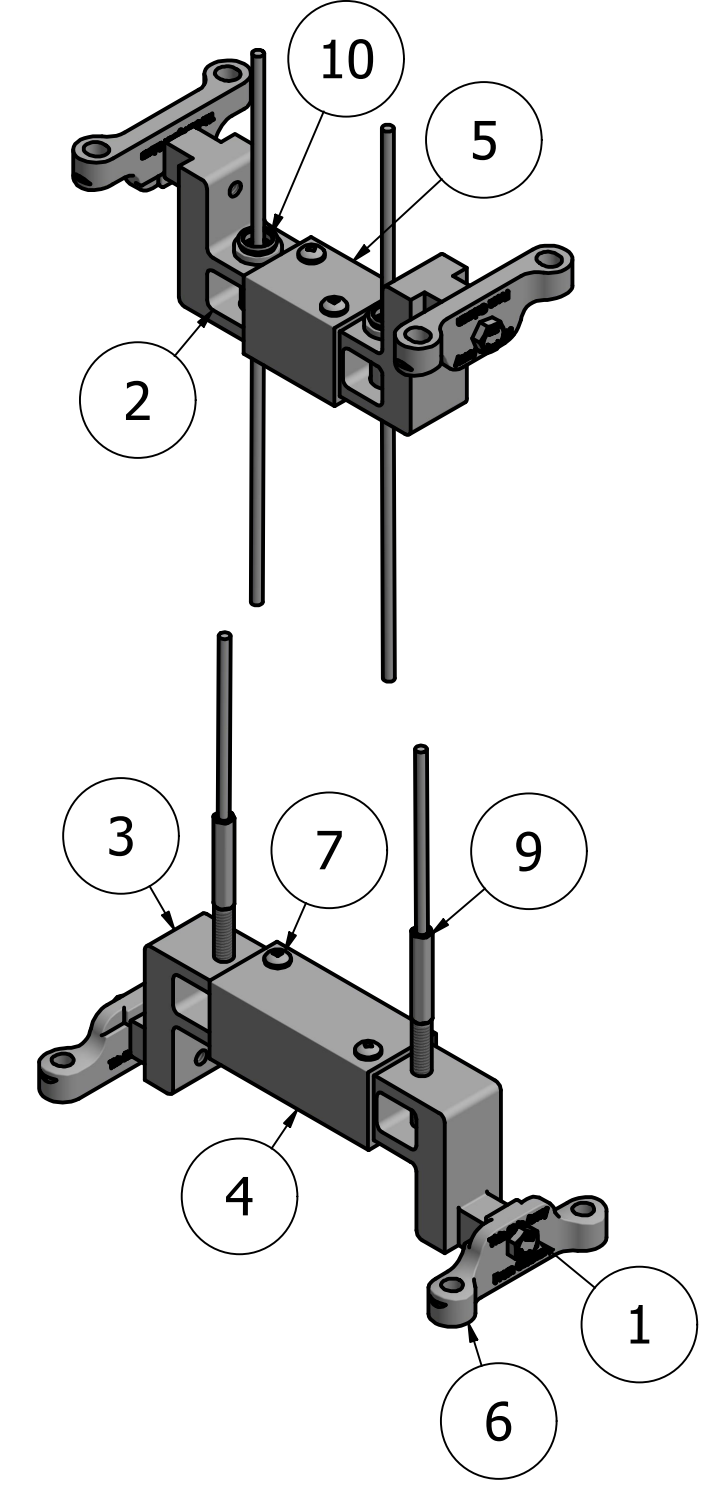
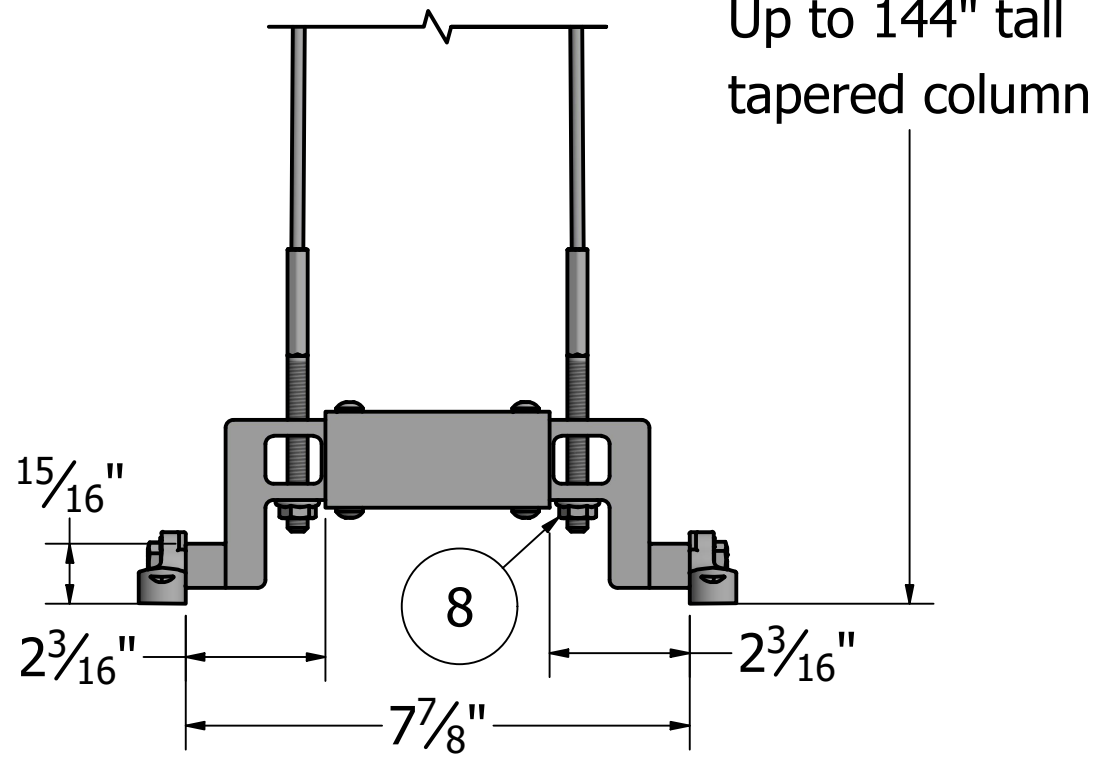
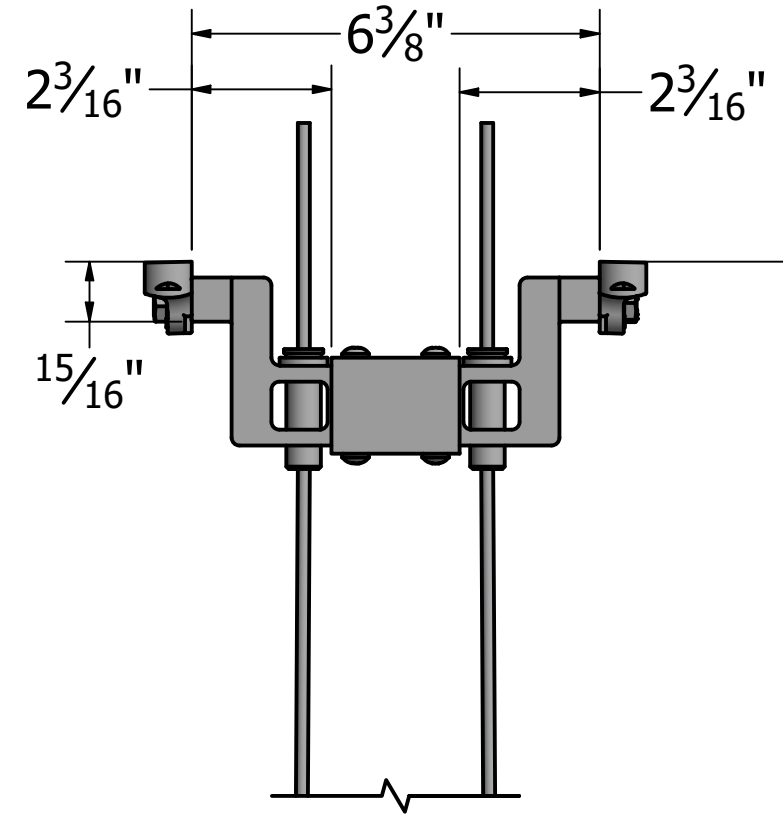
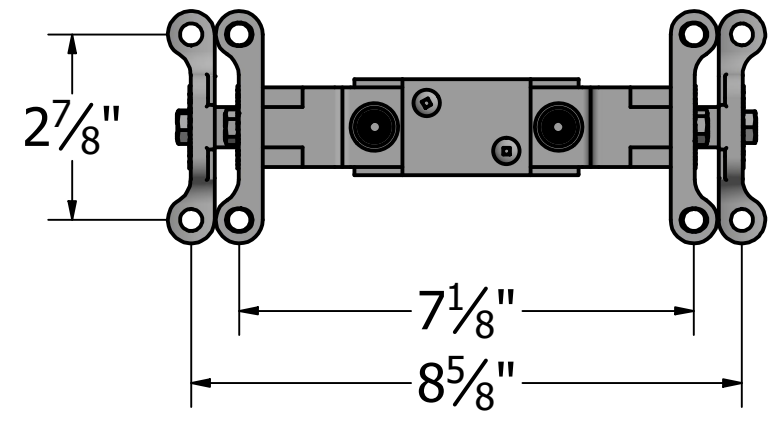


REV.	DESCRIPTION	DATE



Up to 144" tall tapered column

PARTS LIST

ITEM	QTY	PART NUMBER	DESCRIPTION
1	4	110865ZZZ	Bolt 5_16-18 x 1 1/4 SS hex
2	2	120205PLN	Uplift Top Bracket 6in
3	2	120208PLN	Uplift Bottom Bracket 8in
4	1	120212PLN	Uplift Connector Tube 8in
5	1	120215PLN	Uplift Connector Tube 8in Tapered
6	4	156037ZZZ	Mnt Std Column
7	8	156300ZZZ	12 x 1.00 Pan Head Self Tapping
8	2	156422ZZZ	5_16-18 Serrated Flange Nut
9	2	156496ZZZ	Cable Kit 3_16in x 12ft
10	2	156497ZZZ	Cable Connector 3_16in



Transforming the Outdoor Living Experience  
 3446 US 6 EAST  
 BREMEN, IN 46506  
 www.diggerspecialties.com

WEIGHT:  
 STANDARD TOLERANCE:  
 .00 \ .01  
 .000 \ .005  
 ANG. \ .5~  
 FRACTIONS: ± 1/16"  
 FILE LOC: Z:\Projects\Projects 2018\Column Uplift Connector\Components\Column Uplift Kit 8in Tapered.idw

DRAWN BY: CM  
 DATE DRAWN: 1/20/2021  
 DRAFT NO. 20210120-3C

MATERIAL:  
 PART NAME: Column Uplift Kit 8in Tapered.idw  
 PART NUMBER: 120217PLN  
 REV.